



## AMARILLO “ALL-SEASONS” TRITICALE

### *We're on our way with Amarillo!*

- A top yielding Winter / Spring / Alternative Triticale with excellent disease resistance
- A wide window of sowing from late September through to April
- Highly productive but low input
- Very good all round disease resistance
- Rabbit resistant - Rabbits avoid eating triticale
- An excellent variety for all soils
- Early harvesting variety
- High protein and lysine content
- Good yield of quality straw
- Ideal for wholecrop, either on its own or in mixture with vetch
- “Flexi-Mix” Amarillo/ vetch mix also available



# *You'll be on your way with Amarillo!*

## WHY CHOOSE AMARILLO?

- Amarillo delivers high yields for modest inputs.
- Amarillo is ideally suited to a low input approach, with its high yields and excellent disease resistance.
- Amarillo also responds well to moderate input regimes where it will deliver on a similar level to wheat if given the same level of input.
- Amarillo gives the added advantages of being an excellent option for wholecrop.
- For livestock farmers, Amarillo is a natural choice. It has high levels of protein and lysine, and will give a good yield of good quality straw.
- Amarillo is well-proven, being one of the most widely grown varieties in the UK for the last 5 years running.
- Amarillo will put you well on your way to a better result.

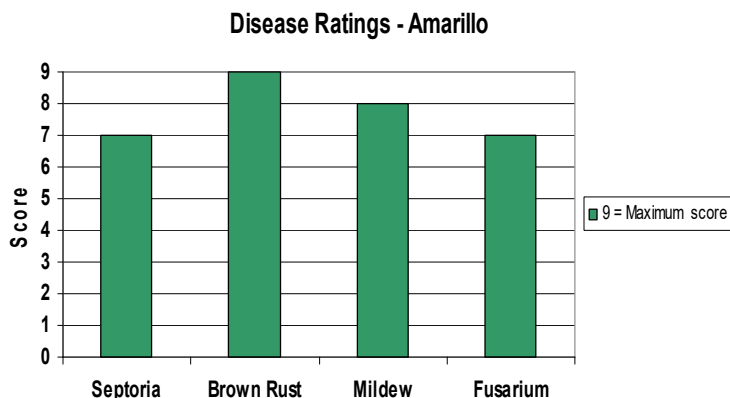
## FLEXIBILITY

Amarillo has no vernalisation requirement, meaning that it can also be sown in the Spring. This is a very useful feature for farmers - where bad weather prevents drilling in the autumn, you are able to use the same seed for the same purpose the following spring.

Also available is “Flexi – mix”. This is a combination of Amarillo with vetch. This is a fantastic autumn or spring-sown forage mixture which gives a big protein boost for growers who intend to wholecrop.

## DISEASE

Triticale is known for its resistance to disease and even within this high standard, Amarillo scores very well. Amarillo is notable not just for high yields, but also for superior disease resistance. It has consistently proven to have very good resistance across all diseases, and it is particularly good on brown rust resistance.



# *You're on your way with Amarillo!*

## Agronomy for Amarillo

<b>Sowing date:</b>	<b>October - April</b>
<b>Seed Rate:</b>	<b>75kg/acre (185kg/Ha)</b>
<b>N-Fertiliser: (Autumn sown input)</b>	<b>Autumn 40kg/Ha Tillering 80kg/Ha Shooting 20kg/Ha Late dose 40kg/Ha</b>
<b>Plant height:</b>	<b>Medium to high</b>
<b>Standing power:</b>	<b>Medium</b>
<b>Disease resistance:</b>	<b>Yellow rust high Brown rust very high Leaf septoria high Ear septoria very high Ear fusarium high to very high</b>
<b>Fungicides:</b>	<b>Depending on disease pressure, a general purpose fungicide is used after ear emergence. Epoxiconazole, Azoxystrobin and others are commonly used.</b>
<b>Herbicides:</b>	<b>No known sensitivity to standard herbicides. Stomp, Topic, Ally and various others are all commonly used.</b>
<b>Growth Regulator</b>	<b>Moddus, Chlormequat and Terpal are all commonly used. The most effective stage is at GS30 (Early stem elongation) Growth regulator is essential where growers apply full rates of Nitrogen.</b>

### Note:

The above agronomy applies to straight crops of Amarillo only. Where flexi-mix is grown (Amarillo with winter vetch), the agronomy and chemical choice is different. Growers growing Amarillo in a mix should refer to Soya UK for specialist advice.

If you have enquiries or would like further information contact us on **02380 696922**